



Roxtec S-overgang for kabelrør i plast

Branngradert gjennomføring for kabelrør i plast.

Roxtec S for kabelrør i plast er en overgang for sveising på strukturn der det er behov for brannklassifisering. Det sørger for en lukket og sikker plass ved anvendelse i gulv. Den rektangulære stålrammen muliggjør ruting av kabel og ledningsrør med høy kabeltetthet. Roxtec RM PPS-tetningsmoduler for kabelrør i plast er merket med tilsvarende NW-størrelsesnummer for å forenkle installasjonen. RM PPS-moduler kan kombineres med vanlige RM-moduler for en kombinasjon av kabelrør og kabler i samme ramme.

- Enkel å vedlikeholde og inspisere
- Gir innebygd reservekapasitet



Produktgenskaper



Brannklassifisert



IP/UL NEMA

Struktur for installasjon



Metall

Festetype



Sveising

Graderinger og sertifikater

Brann

- E/EI klassifisering i henhold til EN 45545 E60

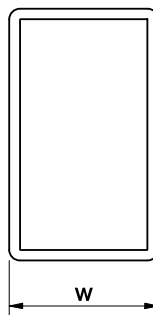
Tetthet

- IP 66/67

Rammedimensjoner

mm/kg

Rammevariantene nedenfor er et begrenset utvalg. Du kan besøke [roxtec.com](https://www.roxtec.com) for det komplette utvalget av rammer og konfigurasjoner.

	Tittel	Rammeåpninger	Fyllplass	Utvendige mål WxHxD	Utsparingsmål w x h	Vekt	Art.nr.
	S 6x1 ALU	1	120 x 180	140.5 x 238 x 60	143(+1/-1) x 240(+1/-1)	1.2	S006000000131
	S 6x1 PRIMED	1	120 x 180	140.5 x 238 x 60	143(+1/-1) x 240(+1/-1)	3.3	S006000000112
	S 6x1 AISI316	1	120 x 180	140.5 x 238 x 60	143(+1/-1) x 240(+1/-1)	3.3	S006000000121
	S 6x2 ALU	2	120 x 180	271 x 238 x 60	273(+1/-1) x 240(+1/-1)	1.9	S006000000231
	S 6x2 AISI316	2	120 x 180	271 x 238 x 60	273(+1/-1) x 240(+1/-1)	5.5	S006000000221
	S 6x2 PRIMED	2	120 x 180	271 x 238 x 60	273(+1/-1) x 240(+1/-1)	5.5	S006000000212
	S 6x3 PRIMED	3	120 x 180	401.5 x 238 x 60	404(+1/-1) x 240(+1/-1)	7.7	S006000000312
	S 6x3 AISI316	3	120 x 180	401.5 x 238 x 60	404(+1/-1) x 240(+1/-1)	7.7	S006000000321
	S 6x3 ALU	3	120 x 180	401.5 x 238 x 60	404(+1/-1) x 240(+1/-1)	2.6	S006000000331

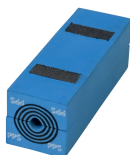


Tetningskomponentdata

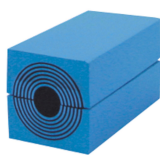
Tetningskomponenter



smøremiddel



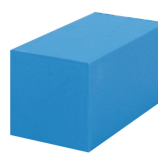
RM PPS-modul med
Multidiameter™



RM-modul med
Multidiameter™



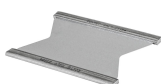
Wedge og Wedgekit



RM blindmodul



sveiseverktøy



Stagplate

Tilbehør

For ytterligere informasjon, kan du besøke www.roxtec.com.

The product information provided by Roxtec does not release the purchaser of the Roxtec system, or part thereof, from the obligation to independently determine the suitability of the products for the intended process, installation and/or use.

Roxtec gives no guarantee for the Roxtec system or any part thereof and assumes no liability for any loss or damage whatsoever, whether direct, indirect, consequential, loss of profit or otherwise, occurred or caused by the Roxtec systems or installations containing components not manufactured by an authorized manufacturer and/or occurred or caused by the use of the Roxtec system in a manner or for an application other than for which the Roxtec system was designed or intended.

Roxtec expressly excludes any implied warranties of merchantability and fitness for a particular purpose and all other express or implied representations and warranties provided by statute or common law. User determines suitability of the Roxtec system for intended use and assumes all risk and liability in connection therewith. In no event shall Roxtec be liable for indirect, consequential, punitive, special, exemplary or incidental damages or losses.

The Roxtec products are offered and sold in accordance with the conditions of the Roxtec General Terms of Sales. The latest version of the Roxtec General Terms of Sales can be downloaded from <https://www.roxtec.com/en/about-us/about-roxtec/general-terms-of-sales/>

We reserve the right to make changes to the product and technical information without further notice. Any errors in print or entry are no claims for indemnity. The content of this publication is the property of Roxtec International AB and is protected by copyright.

This document was generated on: 2024-04-27